



INTERFACES:

1. UNIT TO BE SHIPPED WITH PROTECTIVE COVERS ON WORKING FLUID AND COOLANT PORTS
2. STANDARD POSITION TOLERANCE: 

$\varnothing$	3	A	B	C
---------------	---	---	---	---
3. RECOMMENDED TORQUE SPECIFICATION: 20 NM+/- 1 NM
4. EVACUATE COOLANT LINES WITH A MINIMUM PRESSURE OF 0.15 PSIA
5. IP RATING ONLY VALID WHEN MATING ELECTRICAL CONNECTORS ARE INSTALLED
6. RED LOCTITE 262 (OR EQUIVALENT) RECOMMENDED
7. BLUE LOCTITE 242 (OR EQUIVALENT) RECOMMENDED
8. UNIT MOUNTING ORIENTATION IS FLEXIBLE. DOWNWARD MOTOR ORIENTATION IS NOT PREFERRED.
9. PROPER OPERATING DIRECTION WHEN VIEWED FROM RESPECTIVE ORIENTATION
10. MATING CONNECTOR/HARNESS AVAILABLE

PROPER STORAGE:

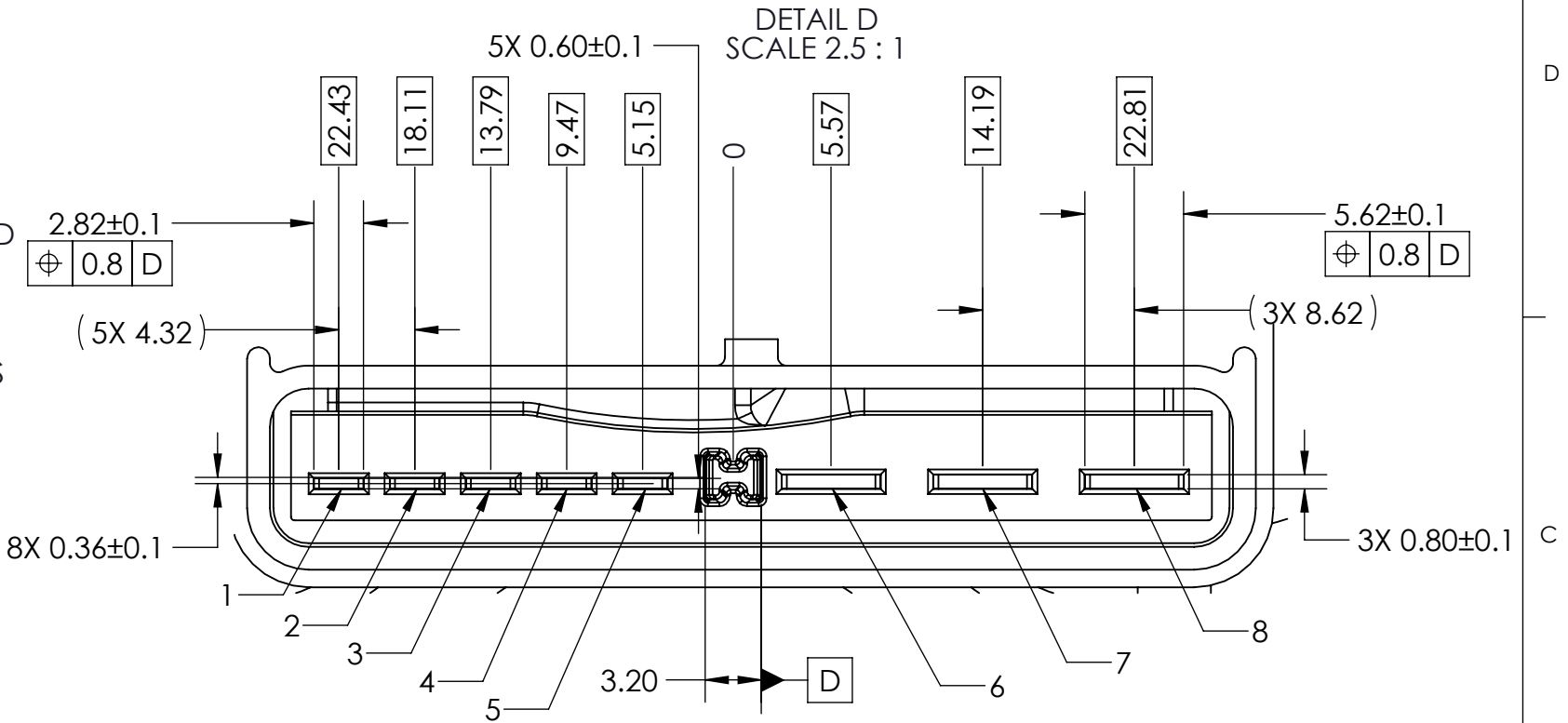
11. UNITS ARE RECOMMENDED TO BE RETURNED TO ITS ORIGINAL PACKAGING FOR SAFEKEEPING AND PROTECTION AGAINST DENTS OR SCRATCHES
12. STORE UNITS INDOORS, IN A DRY AREA, TO PREVENT DUNNAGE BREAKDOWN AND GENERAL OXIDATION
  - IF A DRY AREA IS UNAVAILABLE PLACE THE UNIT IN AN APPROPRIATELY SIZED VAPOR CORROSION INHIBITOR (VCI) BAG, AND THEN BACK INTO ITS ORIGINAL PACKAGING
13. KEEP ALL INTERFACES CAPPED OR COVERED TO AVOID OXIDATION OF CRITICAL FEATURES
14. MAXIMUM SHELF LIFE OF 18 MONTHS WITHOUT OPERATION

HANDLING INSTRUCTIONS

15. AVOID CONTACT WITH EXTERNAL OBJECTS TO PREVENT DENTS OR SRATCHES
16. ENSURE THE UNIT IS NOT RUNNING AND IS POWERED OFF BEFORE DISCONNECTING

CLEANLINESS SPECIFICATION:

17. UNITS WILL SHIP FROM AIR SQUARED IN ACCORDANCE WITH AIR SQUARED CLEANLINESS SPECIFICATION
  - EXTERNAL SURFACES WILL BE FREE OF DEBRIS, BURRS, OIL, LUBRICANT, AND CORROSION



**CONFIDENTIAL:** THIS DOCUMENT AND THE DATA DISCLOSED HEREIN OR HERewith IS NOT TO BE REPRODUCED, USED, OR DISCLOSED IN WHOLE OR IN PART TO ANYONE WITHOUT THE PERMISSION OF AIR SQUARED, INC.

DEFAULT TOLERANCES:

X. ± 2.0  
.X ± 1.0  
.XX ± 0.50  
ANGULAR ± 3.0°

DIMENSIONS ARE IN MM



INTERPRET DRAWING  
PER ASME Y14.5-2009

SHEET 2 OF 3 SCALE: 1:5

**Air squared**

DESCRIPTION:

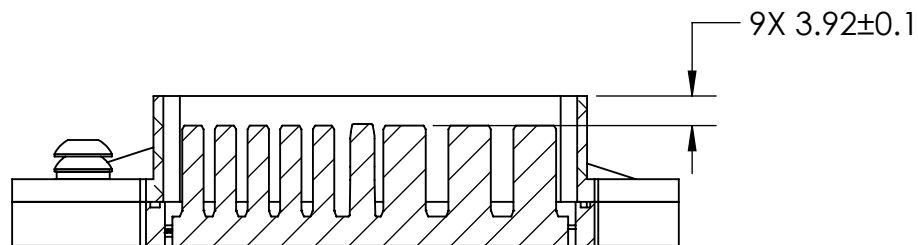
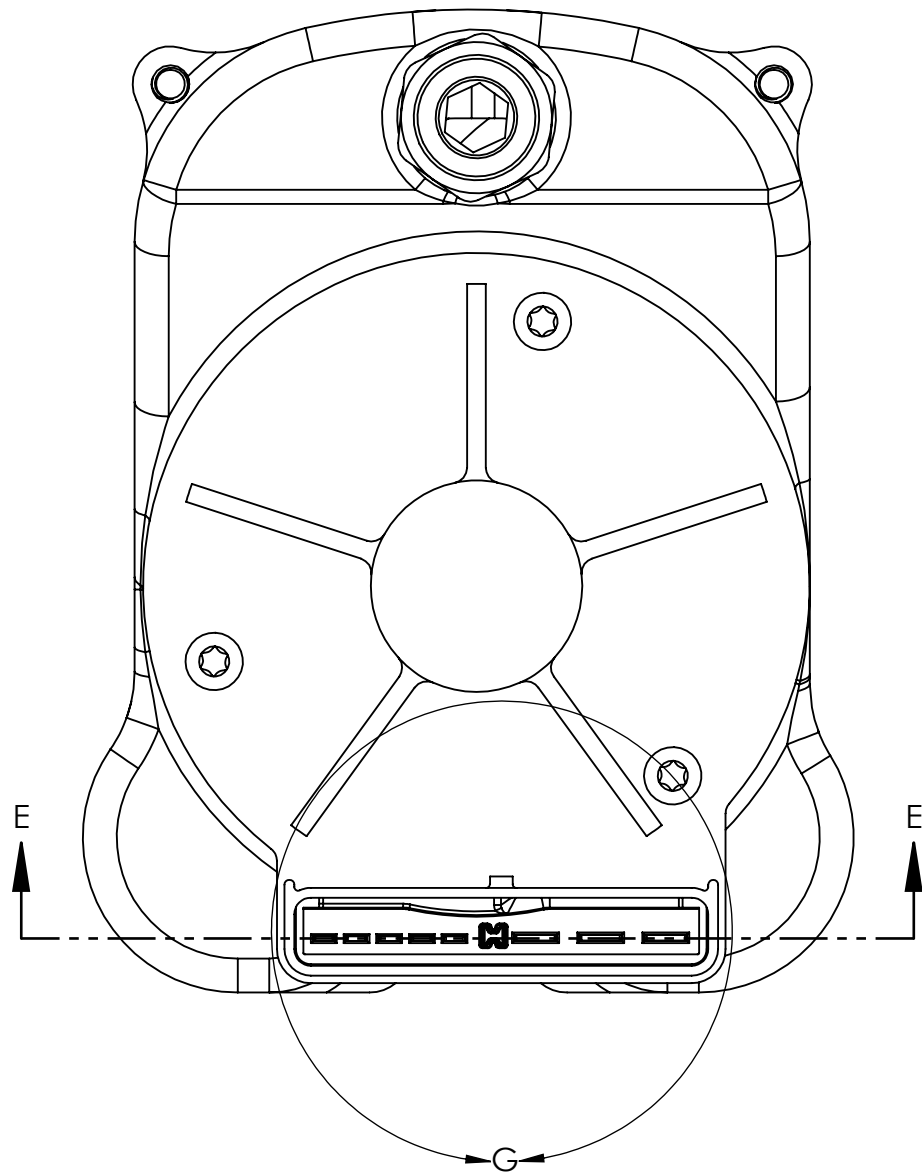
SCROLL COMPRESSOR

SIZE  
**B**

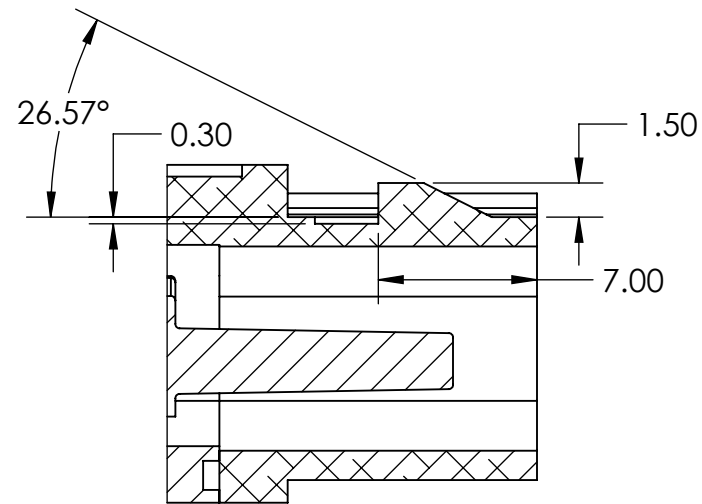
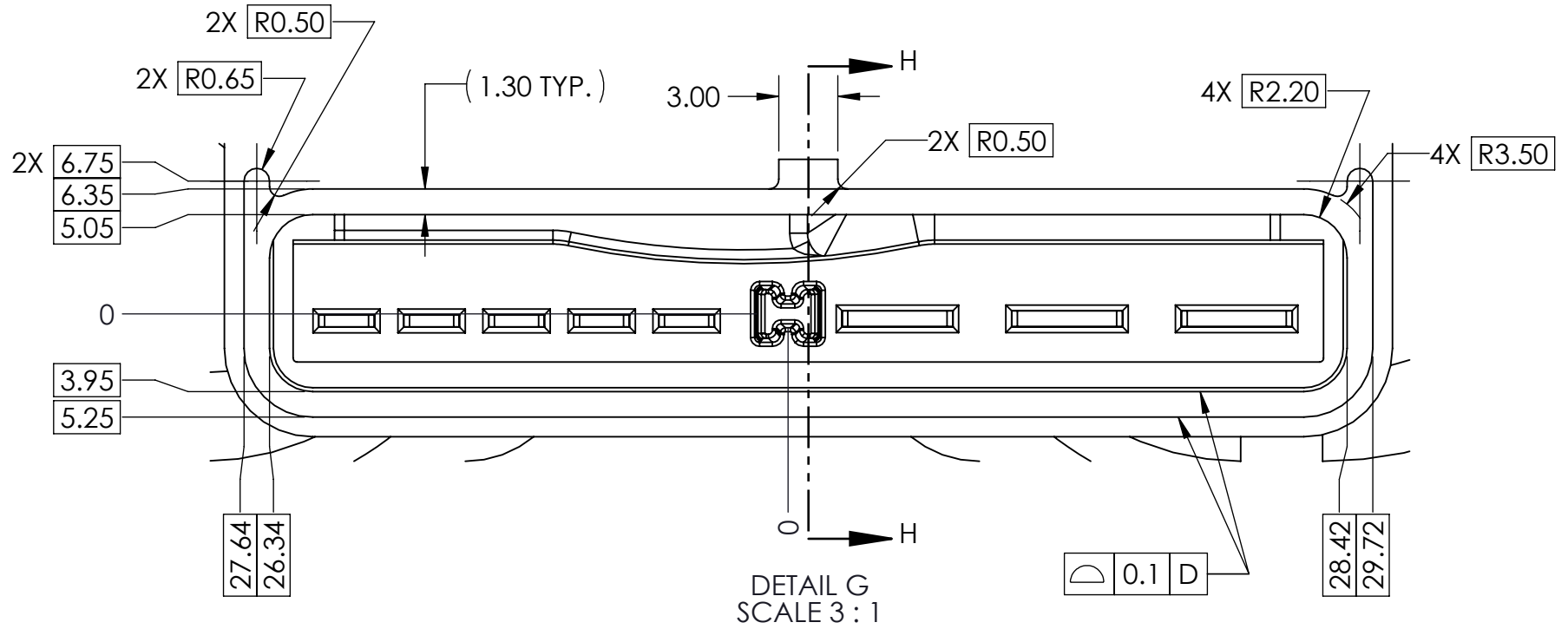
PART NO.

P09H015B-A01

REV.  
**A**



SECTION E-E  
SCALE 1 : 1



SECTION H-H  
SCALE 3 : 1

**CONFIDENTIAL:** THIS DOCUMENT AND THE DATA DISCLOSED HEREIN OR HERewith IS NOT TO BE REPRODUCED, USED, OR DISCLOSED IN WHOLE OR IN PART TO ANYONE WITHOUT THE PERMISSION OF AIR SQUARED, INC.

DEFAULT TOLERANCES:

X. ± 2.0  
.X ± 1.0  
.XX ± 0.50  
ANGULAR ± 3.0°

DIMENSIONS ARE IN MM



INTERPRET DRAWING  
PER ASME Y14.5-2009

SHEET 3 OF 3 SCALE: 1:5

**Air squared**

DESCRIPTION:  
SCROLL COMPRESSOR

SIZE <b>B</b>	PART NO. P09H015B-A01	REV. <b>A</b>
------------------	--------------------------	------------------