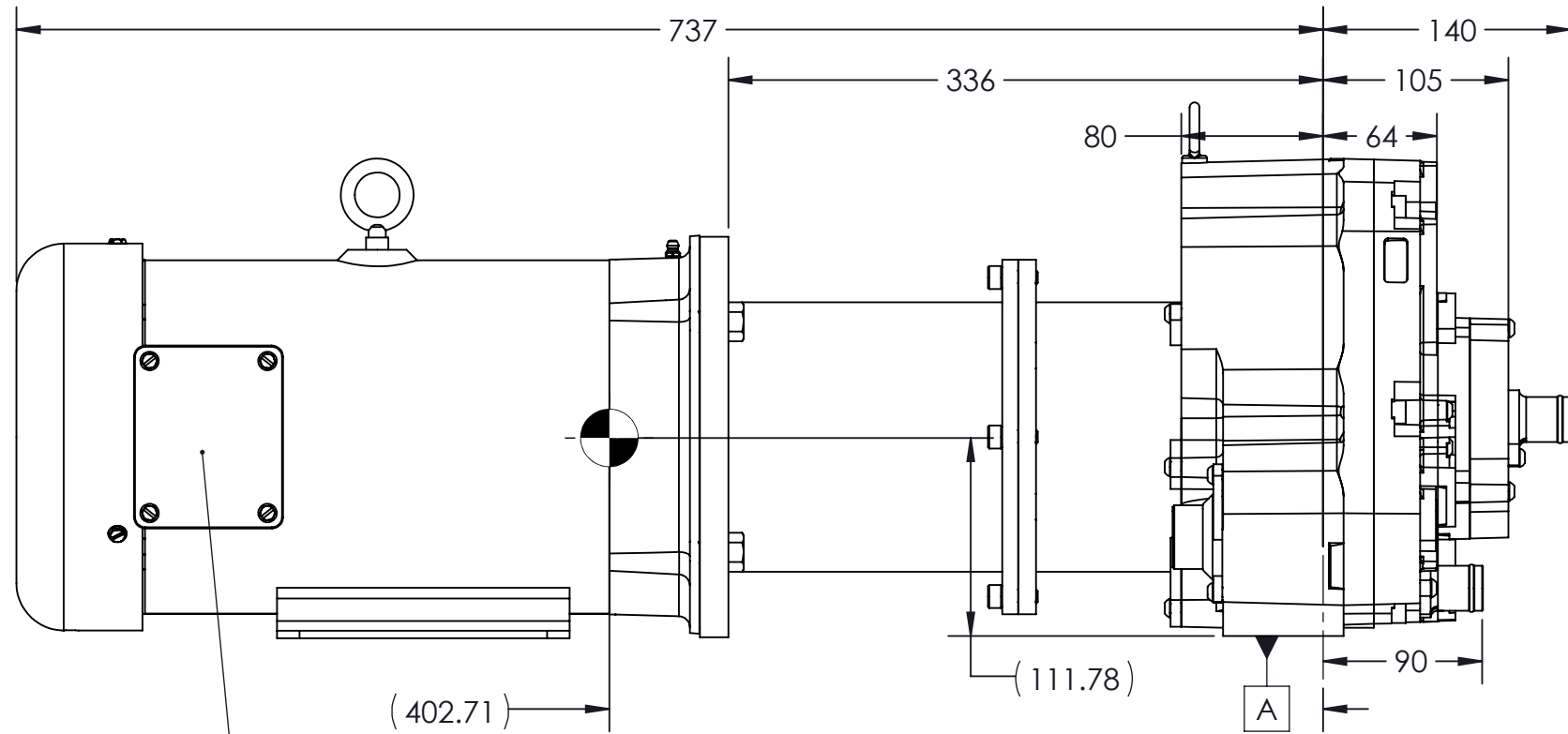
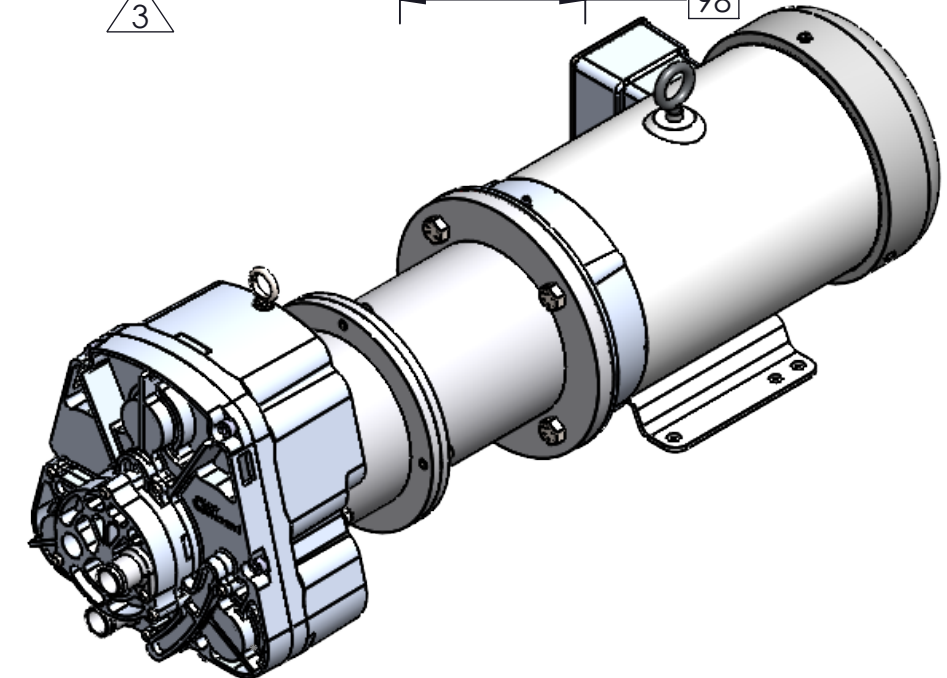
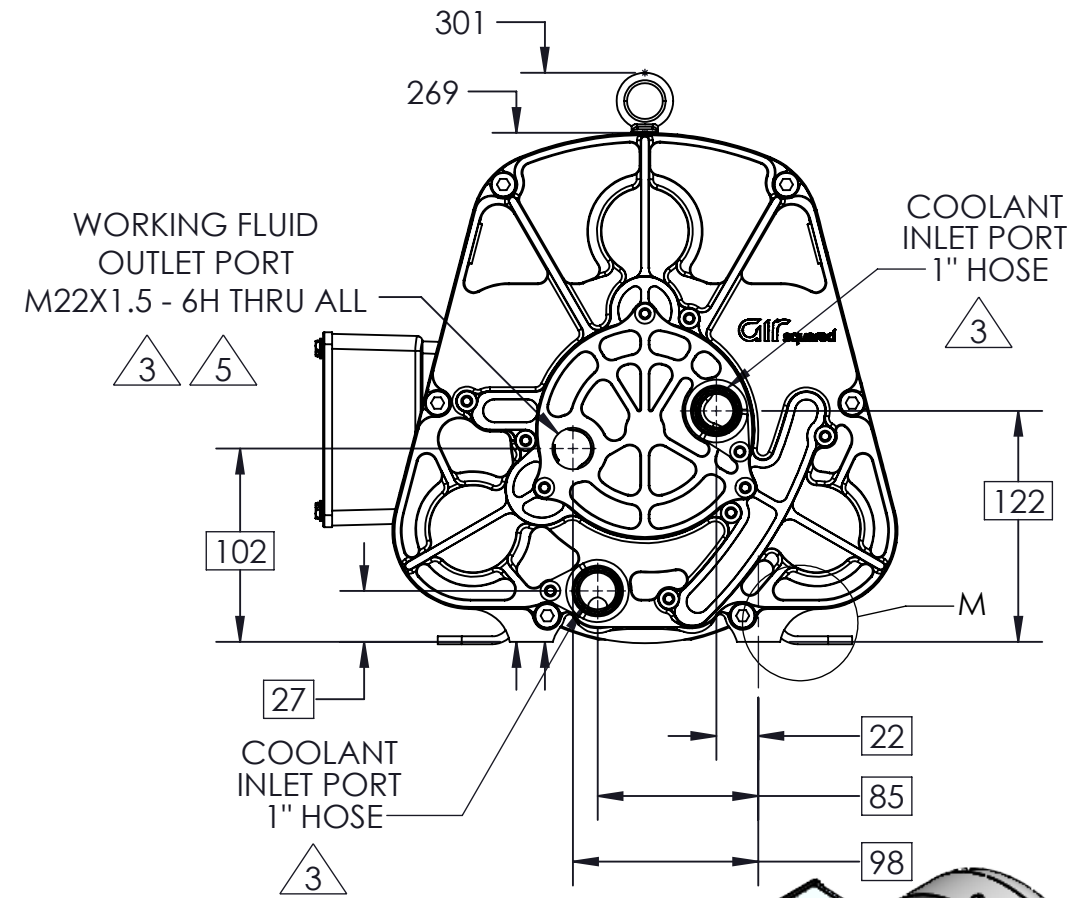


DETAIL M  
SCALE 1 : 2



MOTOR LEADS  
LOCATION



**COMPRESSOR SPECIFICATIONS**

VOLUME RATIO	3.64	
SUCTION VOLUME	134.5 cc	
MAX PRESSURE DIFFERENTIAL	13.1 Bar <sub>g</sub>	190 PSI <sub>g</sub>
MAX FLOW	425 LPM <sub>v</sub>	15 CFM <sub>v</sub>
MASS (W/O COOLANT)	~67 kg	~148 lb
IP RATING	SEMI-HERMETIC	
MAX ALLOWABLE INLET PRESSURE	100 PSI	

**ELECTRICAL SPECIFICATIONS**

NOMINAL VOLTAGE	460V AC	230V AC
CONTINUOUS RATED LINE CURRENT	8.4 A	16.8 A
SPEED RATING	3450 RPM	
FREQUENCY	60 Hz	
TORQUE	7.5 HP	
# OF POLES	2	
MOTOR LEADS SIZE	16 AWG	
# OF MOTOR LEADS	9	

DEFAULT TOLERANCES:

- X. ± 2.0
- .X ± 1.0
- .XX ± 0.50
- .XXX ± 0.100
- ANGULAR ± 3.0°

INTERPRET DRAWING PER  
ASME Y14.5-2009

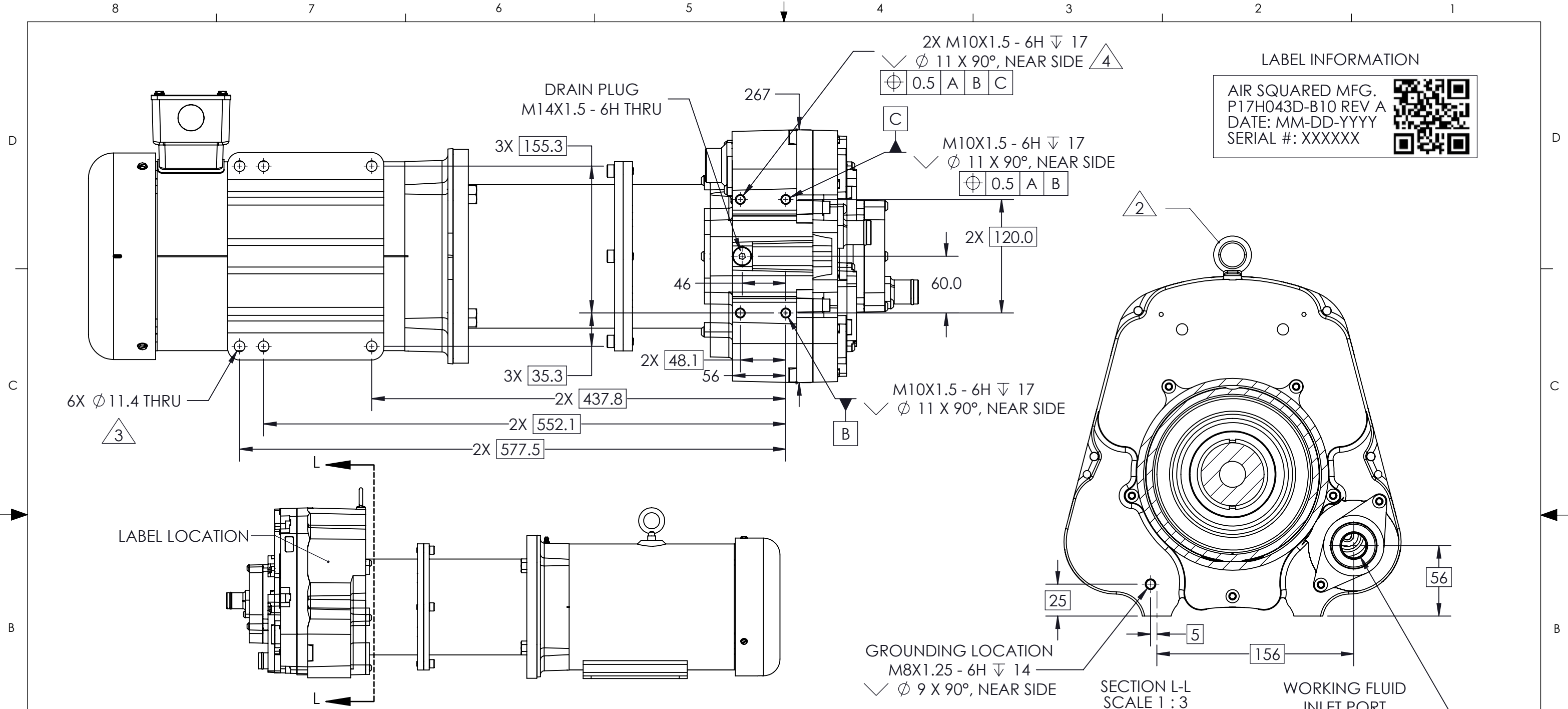
CONFIDENTIAL.  
THIS DOCUMENT AND  
THE DATA DISCLOSED  
HEREIN OR HERewith IS  
NOT TO BE  
REPRODUCED, USED, OR  
DISCLOSED IN WHOLE  
OR IN PART TO ANYONE  
WITHOUT THE  
PERMISSION OF AIR  
SQUARED, INC.

DIMENSIONS ARE IN MM  
SHEET 1 OF 2 SCALE: 1:10



DESCRIPTION:  
**SCROLL COMPRESSOR  
SALES LAYOUT**

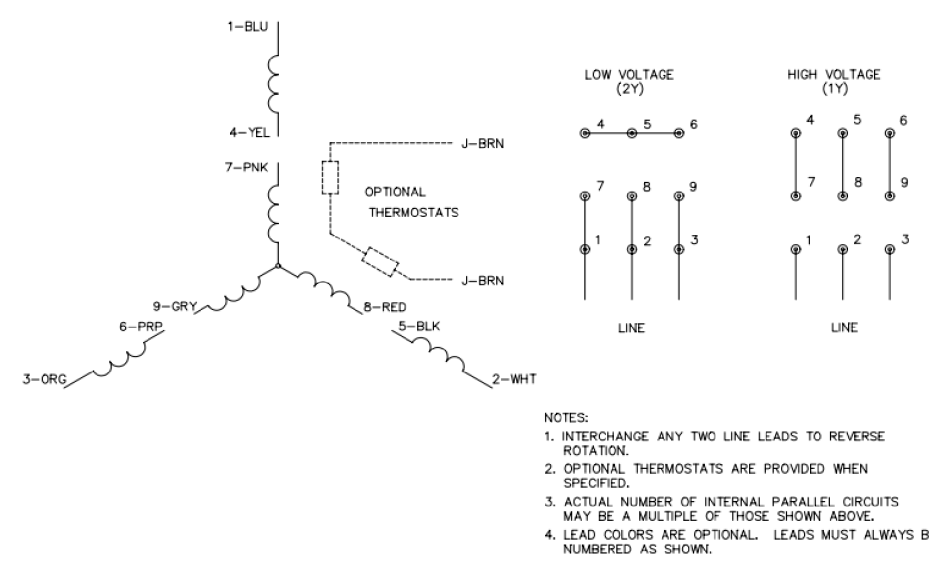
SIZE <b>B</b>	PART NO. <b>P17H043D-B10</b>	REV. <b>A</b>
------------------	---------------------------------	------------------



**LABEL INFORMATION**

AIR SQUARED MFG.  
P17H043D-B10 REV A  
DATE: MM-DD-YYYY  
SERIAL #: XXXXXX

- UNIT MOUNT ORIENTATION IS FLEXIBLE. DOWNWARD ORIENTATION IS NOT PREFERRED.
- $\triangle$  2 LIFTING HOOK NOT REQUIRED FOR OPERATION. REMOVE AFTER SYSTEM INSTALLATION.
- $\triangle$  3 STANDARD POSITION TOLERANCE:  
 $\oplus$  3 A B C
- $\triangle$  4 RECOMENDED TORQUE SPECIFICATION: 48 NM +/- 10 NM
- $\triangle$  5 RECOMENDED TORQUE SPECIFICATION: 40 NM +/- 8 NM



<b>DEFAULT TOLERANCES:</b> X. $\pm$ 2.0 .X $\pm$ 1.0 .XX $\pm$ 0.50 .XXX $\pm$ 0.100 ANGULAR $\pm$ 3.0°	<b>CONFIDENTIAL.</b> THIS DOCUMENT AND THE DATA DISCLOSED HEREIN OR HERewith IS NOT TO BE REPRODUCED, USED, OR DISCLOSED IN WHOLE OR IN PART TO ANYONE WITHOUT THE PERMISSION OF AIR SQUARED, INC.				
					<b>DESCRIPTION:</b> <b>SCROLL COMPRESSOR SALES LAYOUT</b>
<b>INTERPRET DRAWING PER</b> ASME Y14.5-2009	<b>DIMENSIONS ARE IN MM</b>		<b>SIZE</b> <b>B</b>	<b>PART NO.</b> <b>P17H043D-B10</b>	<b>REV.</b> <b>A</b>
	<b>SHEET 2 OF 2</b>	<b>SCALE: 1:10</b>			