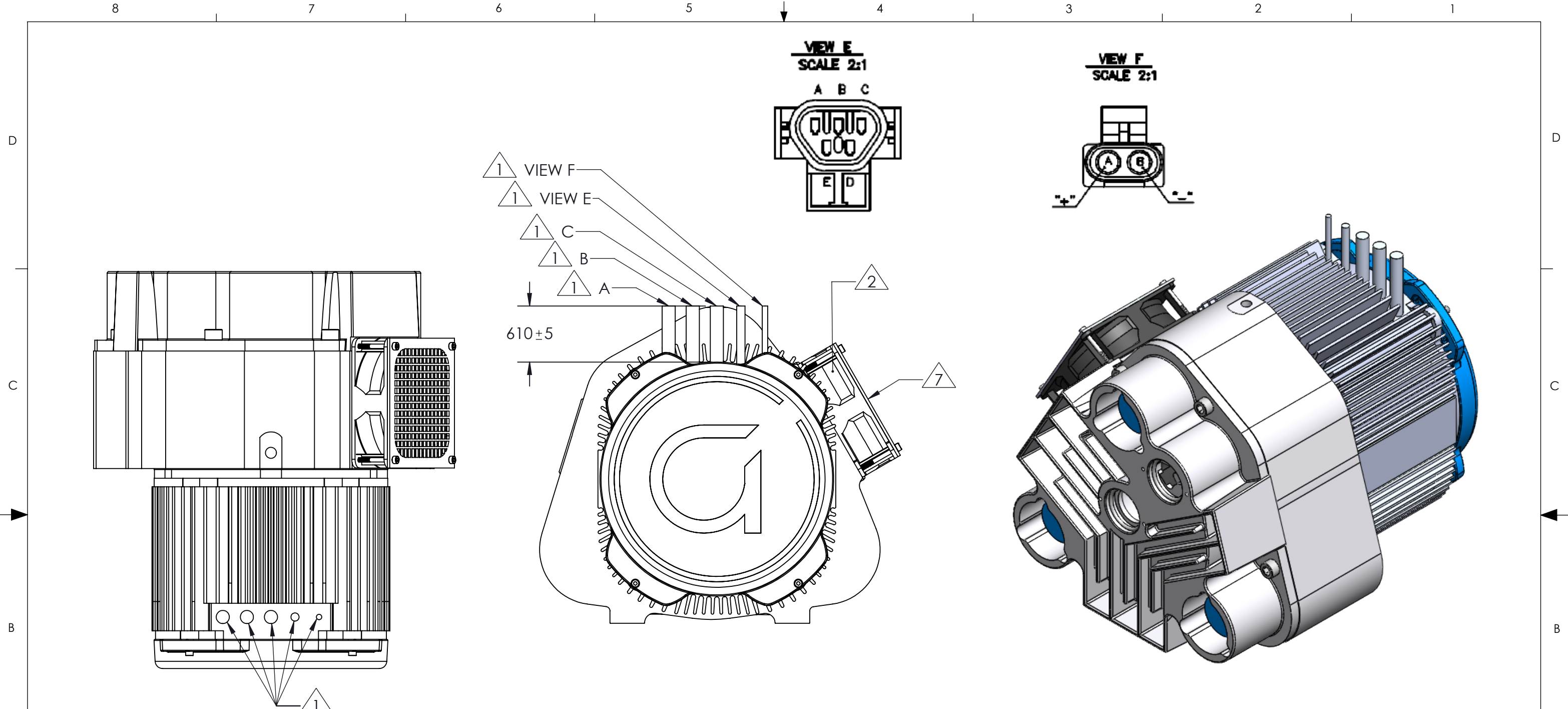


- 1 MOTOR LEADS EXIT FROM SHOWN.
- 2 FAN LEADS EXIT FROM SHOWN.
- 3 PROPER OPERATING DIRECTION WHEN VIEWED FROM RESPECTIVE ORIENTATION.
- 4 WORKING FLUID INLET PORT: 1.75" ELBOW HOSE CONNECTION
- 5 WORKING FLUID OUTLET PORT: 1.75" ELBOW HOSE CONNECTION
- 6 MOUNTING PROVISIONS
- 7 FAN AIRFLOW DIRECTION
- 8 MAXIMUM ALLOWABLE INPUT CURRENT TO THE CONTROLLER AT NOMINAL VOLTAGE.


COMPRESSOR SPECIFICATIONS	
VOLUME RATIO	1.2
SUCTION VOLUME	933 cc
MAX PRESSURE	1.8 Bar _g 26 PSI _g
MAX FLOW	1850 LPM 65 CFM
MASS	37 kg 82 lb
RATED SPEED	2000 RPM
MOTOR SPECIFICATIONS	
NOMINAL VOLTAGE	90-115 VDC
CURRENT LIMIT	50 A ⁸
# OF POLES	10
FAN SPECIFICATIONS	
VOLTAGE RATING	24 V
CURRENT RATING	1.75 A
POWER	42 W

DEFAULT TOLERANCES: X. ± 2.0 .X ± 1.0 .XX ± 0.50 .XXX ± 0.100 ANGULAR ± 3.0°	CONFIDENTIAL. THIS DOCUMENT AND THE DATA DISCLOSED HEREIN OR HERewith IS NOT TO BE REPRODUCED, USED, OR DISCLOSED IN WHOLE OR IN PART TO ANYONE WITHOUT THE PERMISSION OF AIR SQUARED, INC.			
		DESCRIPTION: SALES LAYOUT		
INTERPRET DRAWING PER ASME Y14.5-2009	DIMENSIONS ARE IN MM SHEET 1 OF 2 SCALE: 1:3.5	SIZE B	PART NO. P34H080A-B01	REV. 0



MOTOR POWER		
WIRE COLOR	SIGNAL	
ORANGE	A (M1)	
ORANGE	B (M2)	
ORANGE	C (M3)	
HALL SENSORS		
WIRE COLOR	SIGNAL	PIN LOCATION
WHITE	S1 (U1)	C
GREEN	S2 (U2)	B
BLUE	S3 (U3)	A
BLACK	GND	D
RED	VDD (12+)	E

FAN POWER	
RED	+
BLACK	-
WHITE	FREQUENCY

DEFAULT TOLERANCES: X. ± 2.0 .X ± 1.0 .XX ± 0.50 .XXX ± 0.100 ANGULAR ± 3.0°	CONFIDENTIAL. THIS DOCUMENT AND THE DATA DISCLOSED HEREIN OR HERewith IS NOT TO BE REPRODUCED, USED, OR DISCLOSED IN WHOLE OR IN PART TO ANYONE WITHOUT THE PERMISSION OF AIR SQUARED, INC.			
		DESCRIPTION: SALES LAYOUT		
INTERPRET DRAWING PER ASME Y14.5-2009	DIMENSIONS ARE IN MM SHEET 2 OF 2 SCALE: 1:3.5	SIZE B	PART NO. P34H080A-B01	REV. 0